

Perfection in fluids.

The right *flow*
by German engineering.



DPF6000 - Double Piston Flow Comparator

Data Sheet EPE-147277



Made in
GERMANY

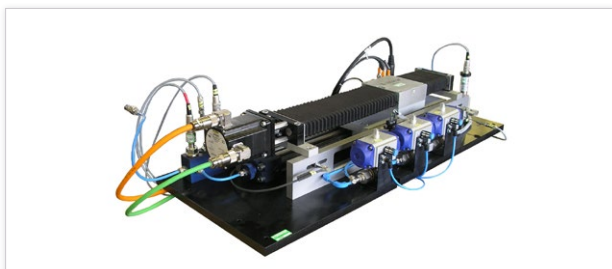


DPF6000 - Double Piston Flow Comparator

EPE-147277



Made in GERMANY



Primary standard 6000 ml/h

Flow calibration with gases up to 6 bar
Traceable to SI units length and time
Measurement uncertainty up to $\leq 0.15\%$ ($k=2$)

Description

The system generates the flow rate traceable to the SI units length and time. The pistons are moved via spindle of a stepper motor. In the initial state one of the piston is fully turned in and the other fully extended. Using the piston cross-section and the process speed the flow can be adjusted with high precision. At the end of the calibration process both pistons are in the opposite position to the initial position. The calibration device is preferably operated with air, on request for gases. The measurement time is greater than 25 seconds.

Advantages

- ✓ Measurement uncertainty up to 0.15% ($k=2$)
- ✓ User defined pre-tempering
- ✓ Calibrations of test pieces with compressed air or other gases
- ✓ No measurement errors due to temperature stratification
- ✓ Fully adjustable air flow

Technical data

Similar to Figure

Operating range	6..6000 ml/h
Measurement uncertainty (50 ml/h..5000 ml/h)	Version A: $\leq 0.15\%$ ($k=2$) Version B: $\leq 0.25\%$ ($k=2$)
Measurement period	$t > 25s$
Operating pressure	up to 6 bar
Dimensions test bench (LxWxH)	1600 x 780 x 1900 mm



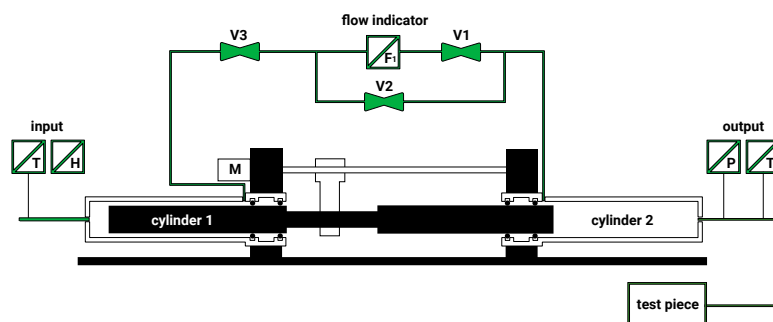
Standard Solutions Application examples:



Gas- and flow measurement technology:

Calibration standard for gas meters, calibration of laval nozzles, MFM, MCF, LFE, venturi nozzles, micro flow and leakage tester

! This is only an **example** interpretation and can change according to your needs.



Top-Innovator 2016

For special requirements we are happy to advise you. Subject to change. / EPE-147277 / Last update: 02/2017 / V02
© EP Ehrler Prüftechnik Engineering GmbH, Wilhelm-Hachtel-Str. 8, D-97996 Niederstetten

TOP-INNOVATOR 2016: EP Ehrler Prüftechnik is one of the most innovative companies in the German SME segment.

+49 (0) 79 32 . 6 06 66 - 0 / +49 (0) 79 32 . 6 06 66 - 11 / info@ep-e.com / www.ep-e.com