

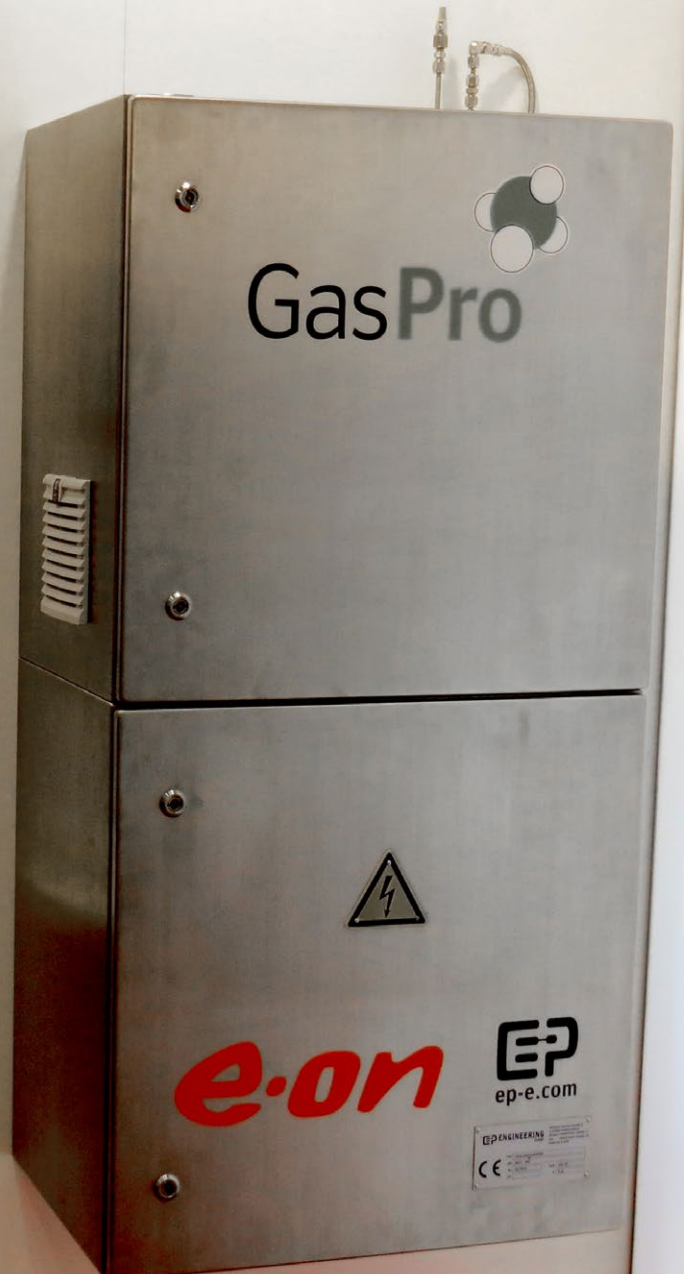
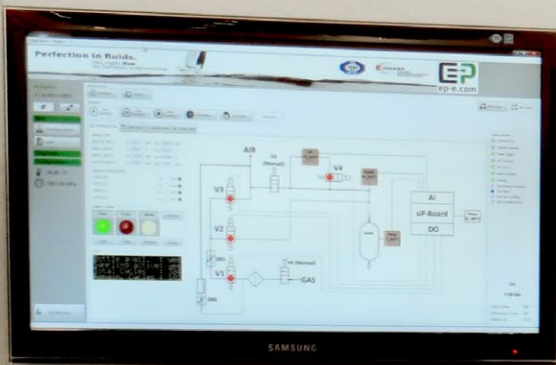
Perfection in fluids.

The right *flow*
by German engineering.



GasPro - Mobile gas sampler

Data Sheet EPE-147304





GasPro - Mobile gas sampler

EPE-147304



Made in
GERMANY



Similar to Figure

Cyclical sampling of gas samples for quality determination

Microcontrollerboard specially developed by EP
Autonomous operation without external power supply
by battery supply

Technical data

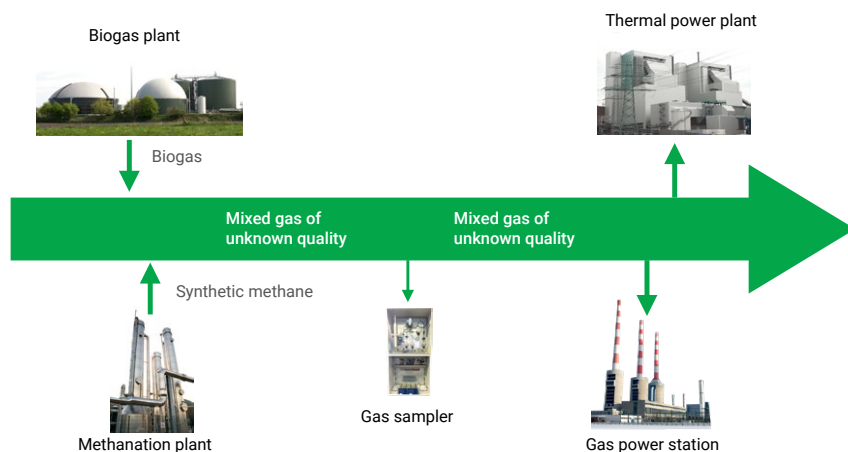
Operating pressure	4..16 bar
Temperature range	-20..+50°C
Supply voltage	230 VAC / optional 24 VDC
Battery life	approx. 2 years
Samples cylinder volume	500 ml
Uncertainty calorific value due to sampling process	0,3%

Benefits

- ✓ Sample duration parameterizable
- ✓ Autonomous operation possible
- ✓ Outdoor installation possible
- ✓ ATEX conform
- ✓ Approval for use in the custody transfer of gas codes 2017/2018

Description

The system is designed for the cyclical withdrawal of gas samples from a pipeline. All individual samples taken from the pipeline have the same defined mass. The gas mixture produced in the bottle has the average gas quality of the gas in the pipeline during the sampling period. The samples can then be taken and analyzed in a laboratory by gas chromatography. The power supply is 230VAC, but can also be self-sufficient by battery pack 24VDC. The system is controlled by a microcontroller board with appropriate firmware developed by EP.



Standard solutions Application example



Systems for natural gas:
Gas sampler for determining the gas burn value



Top-Innovator
2016

For special requirements we are happy to advise you. Subject to change. / EPE-147304 / Last update: 05/2018 / V03
© EP Ehrler Prüftechnik Engineering GmbH, Wilhelm-Hachtel-Str. 8, D-97996 Niederstetten

TOP-INNOVATOR 2016: EP Ehrler Prüftechnik is one of the most innovative companies in the German SME segment.

+49 (0) 79 32 . 6 06 66 - 0 / +49 (0) 79 32 . 6 06 66 - 11 / info@ep-e.com / www.ep-e.com