

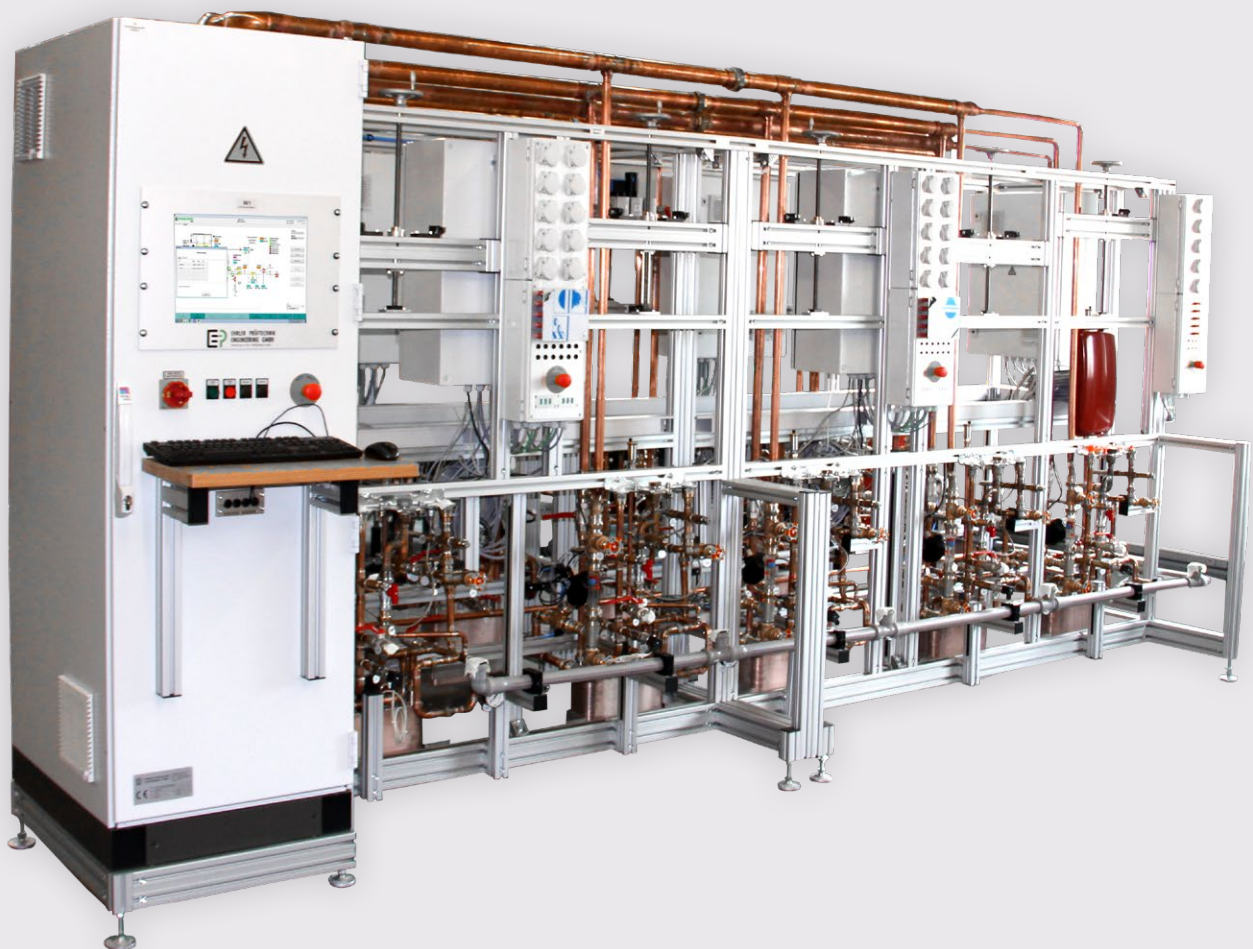
Perfection in fluids.

The right *flow*
by German engineering.



Gas heater test bench

Data Sheet EPE-164160



Made in
GERMANY



Gas heater testing

EPE-164160



Made in GERMANY



Endurance test of gas heaters

Testing of gas central heaters
Power range from 2...45 kW

Technical Data

Pressure heating circuit 0...6000 hPa

Temperature heating circuit 0...120°C

Pressure natural gas 0...60 hPa

Measurement accuracy 0.5% FS

Abmessungen

Test bench (W x H x D) 4500 x 2200 x 2000 mm

Weight 1500 kg

Description

The test bench is used to carry out endurance testing of gas heaters with 45 kW. The heat exchangers of thermals at different load and temperature changes are tested (for example, shock temperature changes - hot heat exchanger is flushed with cold water). Up to 10 test items per test can be connected and tested in continuous operation. Under load the test items are operated between a minimum of 2 kW and a maximum of 45 kW. The hydraulic connections (water circuits) are connected manually. The gas connection and the compressed air connection is also done manually. The test items are supplied via a central ring line with natural gas, with circulating water (cooling circuit) and compressed air (blowing out). The thermal performance of the test item is discharged via a plate heat exchanger and cooling water.

Benefits

- ✓ Up to 10 test items can be tested simultaneously
- ✓ Manual adjustable adaptation device for the various sizes of water heaters
- ✓ Test for heat exchangers at different load and temperature changes (shock test)
- ✓ Supply of test items with natural gas
- ✓ Simulation of hot water circuits

This is only an **example** interpretation and can change according to your needs.



Speziallösungen Anwendungsbeispiele:



Pharma and medicine



Gas- and flow measurement



House and energy techn.



Aviation



Fluid- and valve techn.



Automotive and automation



Filter technology



Energy plant technology



Chemistry



Top-Innovator 2016

For special requirements we are happy to advise you. Subject to change. / EPE-164160 / Last update: 06/2018 / V01
© EP Ehrler Prüftechnik Engineering GmbH, Wilhelm-Hachtel-Str. 8, D-97996 Niederstetten

TOP-INNOVATOR 2016: EP Ehrler Prüftechnik is one of the most innovative companies in the German SME segment.

+49 (0) 79 32 . 6 06 66 - 0 / +49 (0) 79 32 . 6 06 66 - 11 / info@ep-e.com / www.ep-e.com