

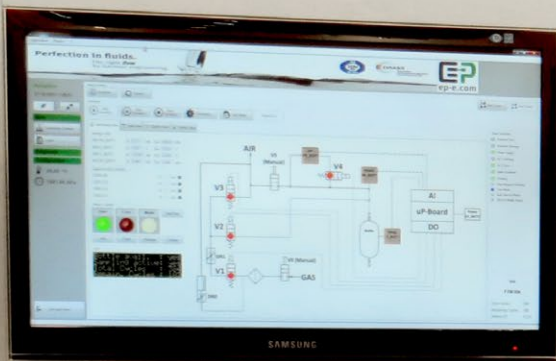
Perfection in fluids.

The right *flow*
by German engineering.



GasPro - Mobile gas sampler

Data Sheet EPE-147304





GasPro - Mobile gas sampler

EPE-147304



Made in GERMANY



Similar to Figure

Cyclical sampling of gas samples for quality determination

Microcontrollerboard specially developed by EP
Autonomous operation without external power supply by battery supply

Technical Data

Medium	Natural gas, hydrogen
Working temperature range	-25..+60°C
Volume sample bottle	500 ml
Battery life	Approx. 25 bottle filling (2 years)
ATEX compliant	0..100°C

Description

The system is designed for cyclical sampling of gas samples from a pipeline. All single samples taken from the pipeline have the same defined mass. A bottle filling consists of 384 individual samples. The gas mixture formed in the bottle has the average gas quality of the gas in the pipeline during the withdrawal period. The samples can then be taken and analyzed in a laboratory using gas chromatography.

The system is self-sufficient since the power supply is provided by battery packs, which are dimensioned for 25 full bottle fillings. For a bottle filling per month, this corresponds to a lifetime of approx. 2 years.

The system is controlled via a microcontrollerboard specially developed by EP with appropriate firmware.

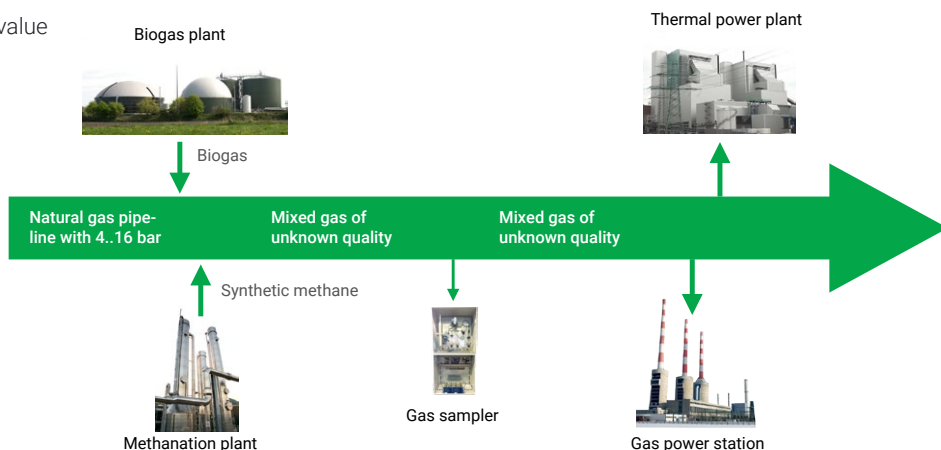
Benefits

- ✓ Independent measuring operation remote from external power supply
- ✓ Battery life approx. 2 years
- ✓ Working temperature range: -25 .. + 60°C
- ✓ ATEX compliant

This is only an **example** interpretation and can change according to your needs.

Standard solutions Application example

Gas and Flow Measurement:
Gas sampler for determining the gas burn value



Top-Innovator 2016

For special requirements we are happy to advise you. Subject to change. / EPE-147304 / Last update: 03/2017 / V01
© EP Ehrler Prüftechnik Engineering GmbH, Wilhelm-Hachtel-Str. 8, D-97996 Niederstetten

TOP-INNOVATOR 2016: EP Ehrler Prüftechnik is one of the most innovative companies in the German SME segment.

+49 (0) 79 32 . 6 06 66 - 0 / +49 (0) 79 32 . 6 06 66 - 11 / info@ep-e.com / www.ep-e.com